



# X INTERNATIONAL RENEWABLE ENERGY INVESTMENT FORUM

National Agency for Energy Regulation of Republic of Moldova

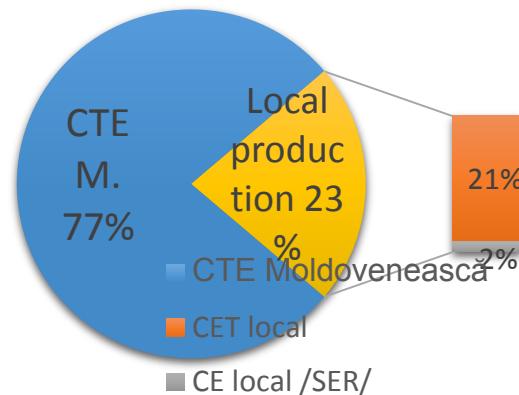
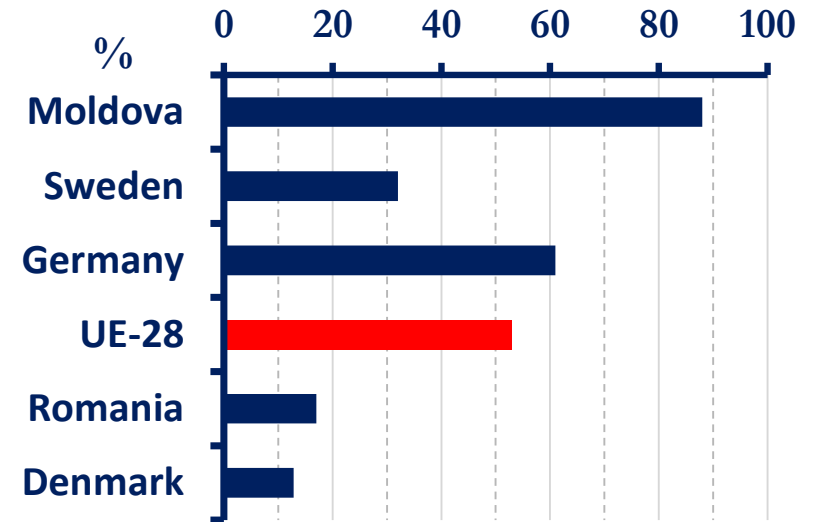
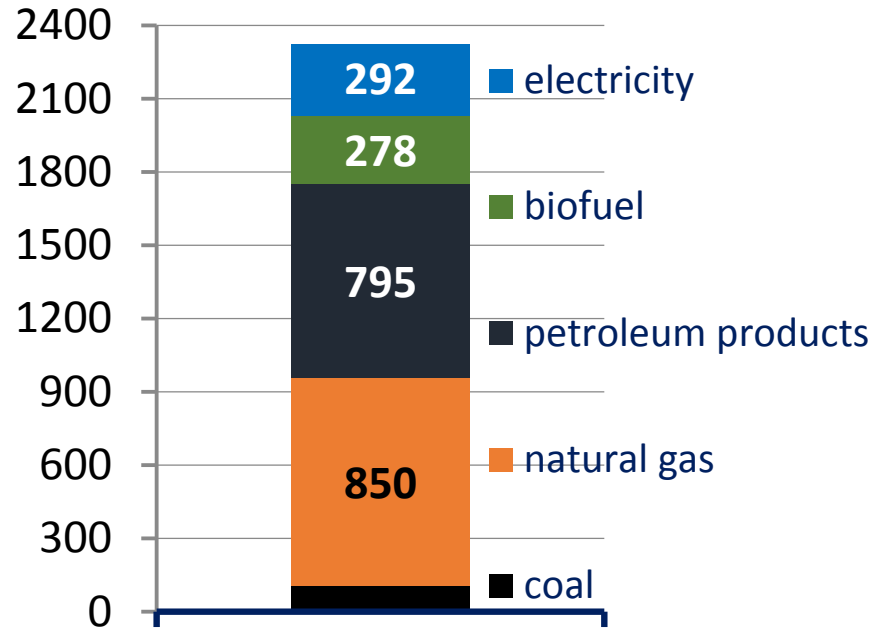
Octavian CALMAC

Director of ANRE



# X INTERNATIONAL RENEWABLE ENERGY INVESTMENT FORUM

## Energy risks and challenges





# X INTERNATIONAL RENEWABLE ENERGY INVESTMENT FORUM

## Renewable energy deployment

**27.8%** - share of RE in gross final energy consumption in 2017

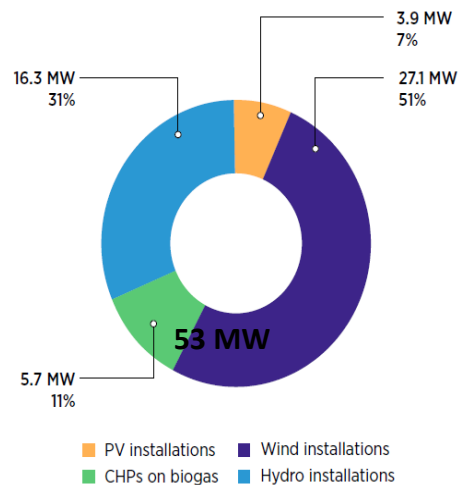
**17%** - RE target by 2020

Decade-long support for biomass in the heating sector

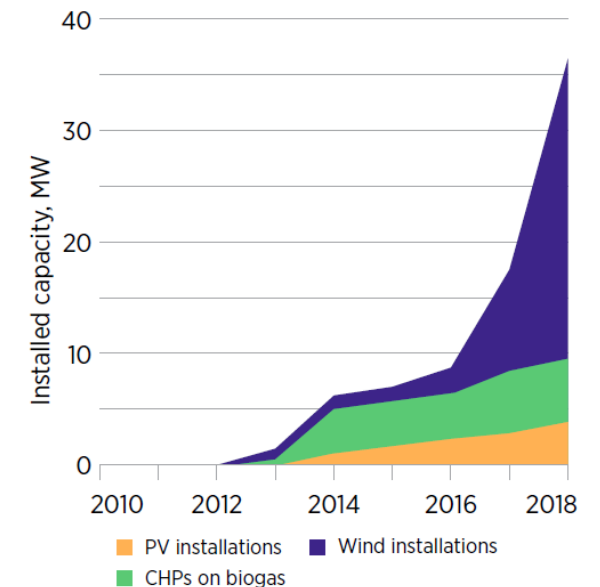
New support mechanisms for RE in the power sector: auctions, feed-in tariffs, net metering

Announced development of about 200 MW of renewables capacity

### Installed renewable energy capacity, by source (as of March 2018\*)



### Dynamics of renewable energy growth



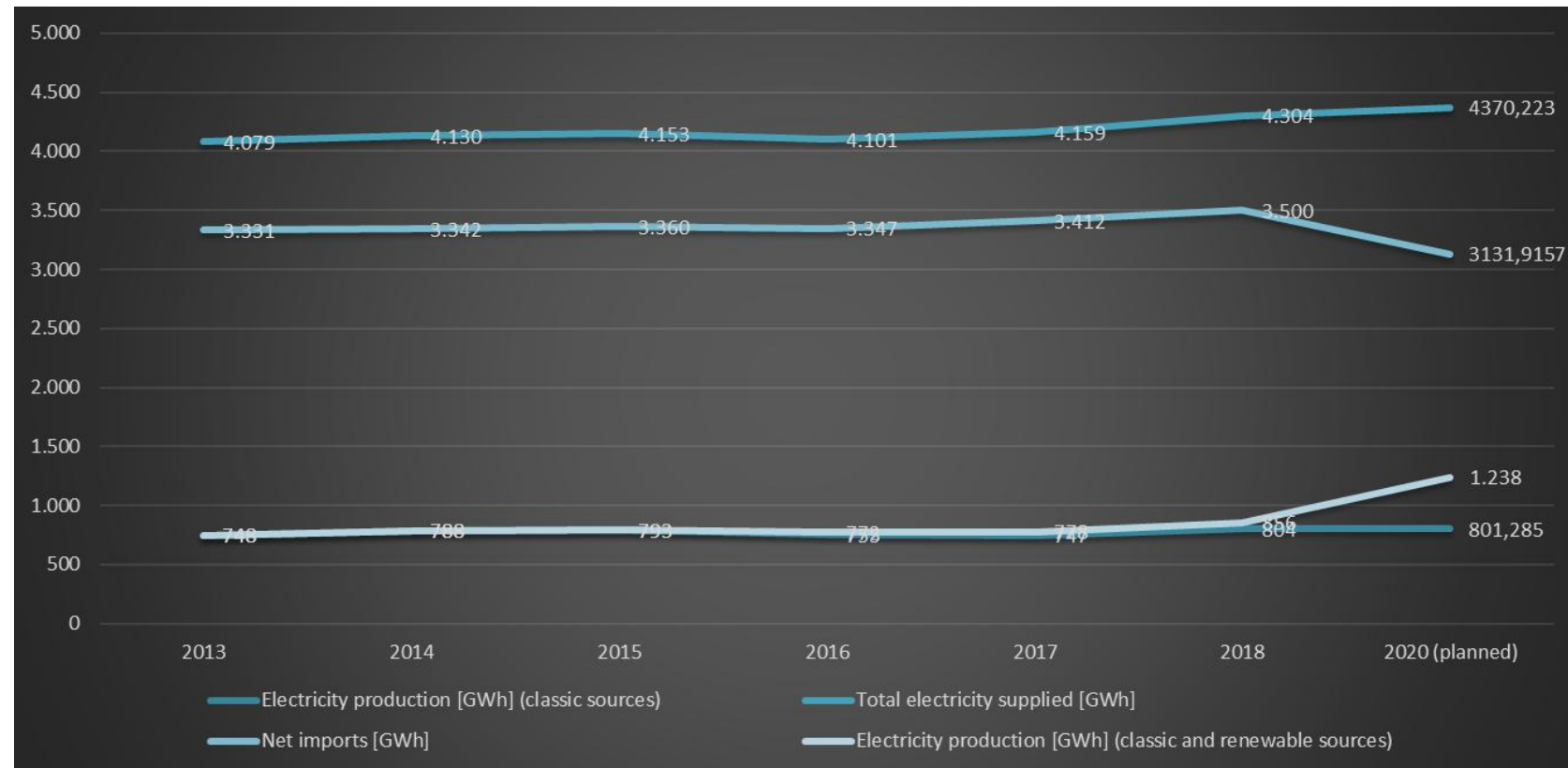
**\*Note:** Since the Law 10/2016 on the promotion of the use of energy from renewable sources entering into force, in March 2018, an additional capacity of 8,6 MW was installed and commissioned



# X INTERNATIONAL RENEWABLE ENERGY INVESTMENT FORUM

➤ **imported energy resources - about 75% (3500 GWh) of the country's total energy consumption (4304 GWh)**

**country's energy intensity is 3 times higher than in developed countries**





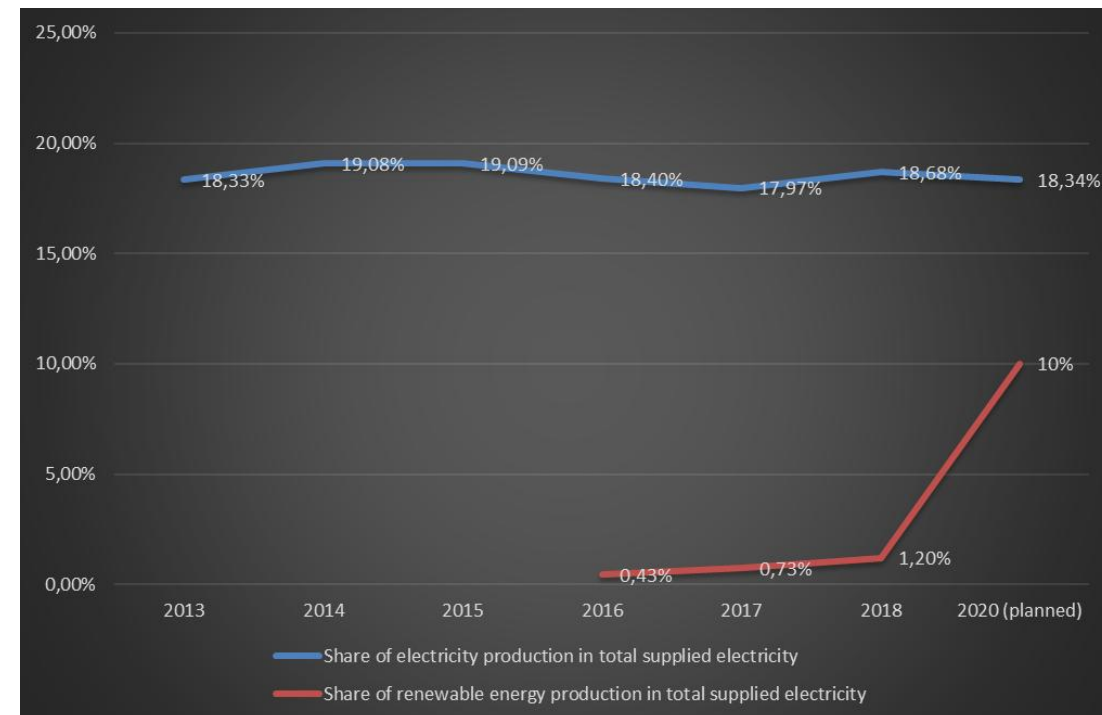
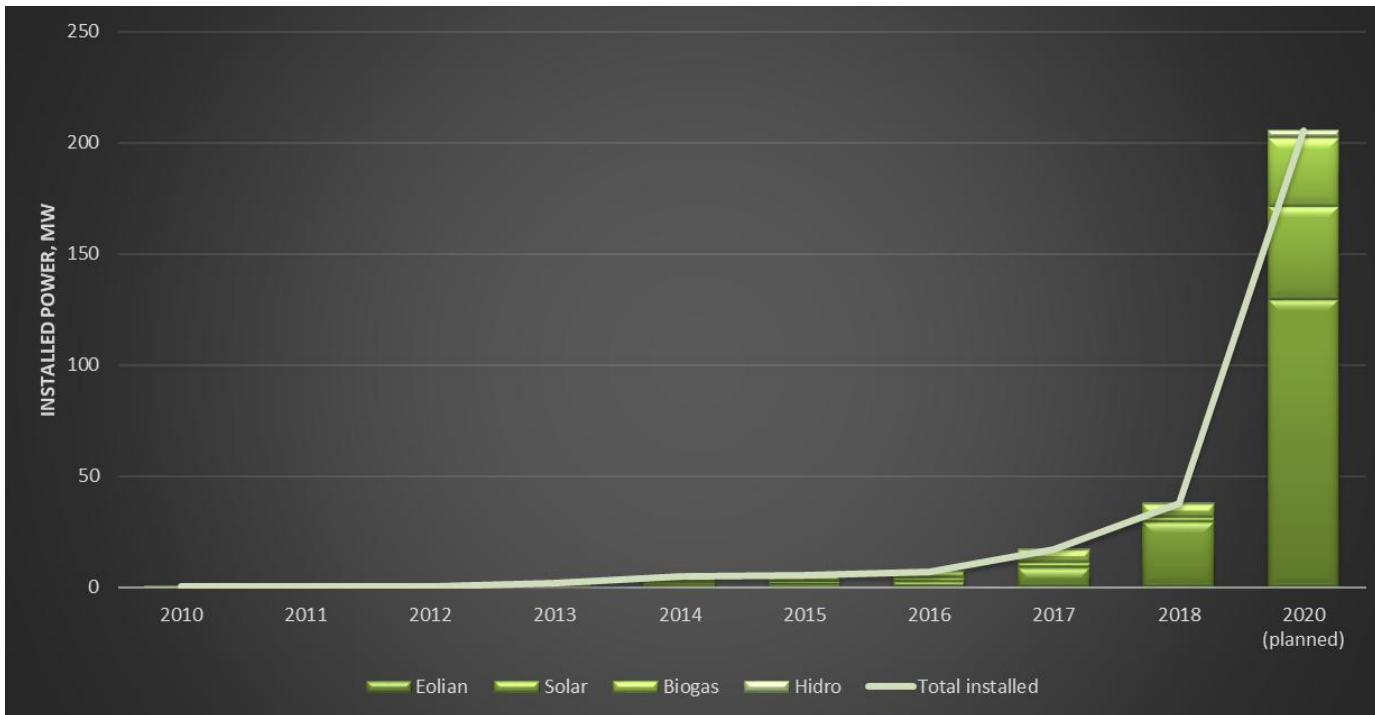
# X INTERNATIONAL RENEWABLE ENERGY INVESTMENT FORUM

Priority directions to overcome the current situation:

- 1.** Promoting energy efficiency and the use of energy from renewable sources;
- 2.** Ensuring the security of electricity supply;
- 3.** Development of competitive energy markets.



# X INTERNATIONAL RENEWABLE ENERGY INVESTMENT FORUM

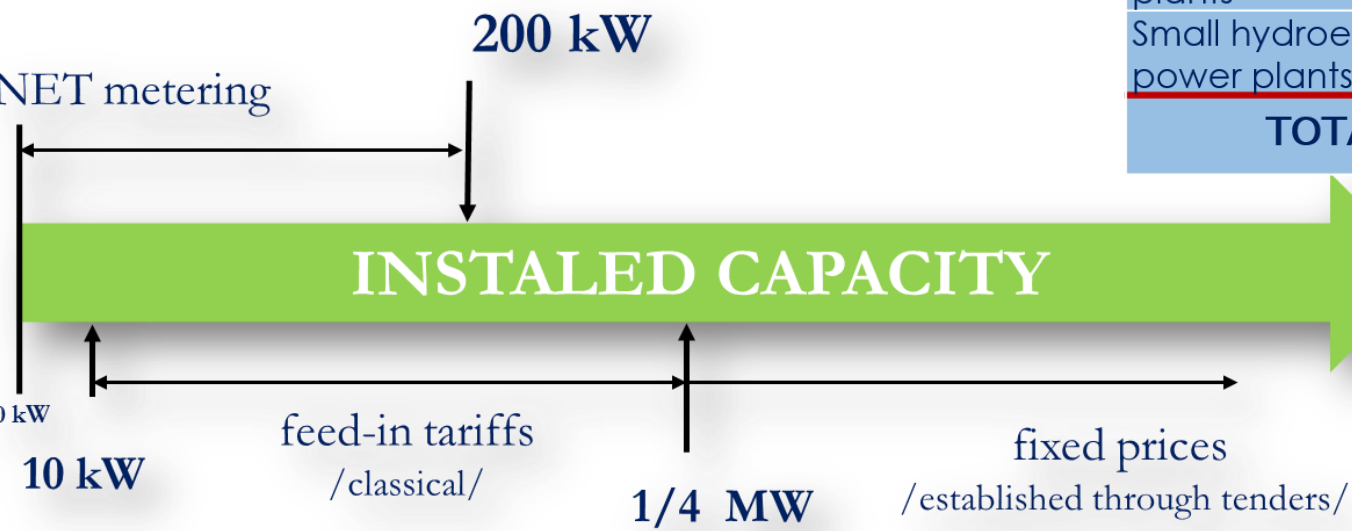


- The share of energy produced from renewable sources from total electricity consumption is **below 2%**, compared to the **10% target set for 2020**



# X INTERNATIONAL RENEWABLE ENERGY INVESTMENT FORUM

➤ 2 support schemes in the field of renewable energy generation capacities



Capacity limit/threshold  
(established by the Government for different type of technologies)

Type of technology	Applicable support scheme, MW		Capacity limits (for differentiation of small and big-scale projects, MW)
	Classic feed-in tariff (fixed tariffs)	Auctions (fixed prices)	
Wind plant	20	80	4
Solar PV	15	25	1
Cogeneration plants on biogas	12	8	1
Biomass cogeneration plants	5	-	1
Small hydroelectric power plants	3	-	1
<b>TOTAL</b>	<b>55</b>	<b>113</b>	<b>—</b>

Capacity limits, quotas and RE categories are established by the G.D. no. 689/2018



[www.anre.md](http://www.anre.md)



+373 22 852 955

+373 22 852 901



[anre@anre.md](mailto:anre@anre.md)



MD 2012, Chișinău

Str. Columna 90

